

# ATTENTION ANGLERS

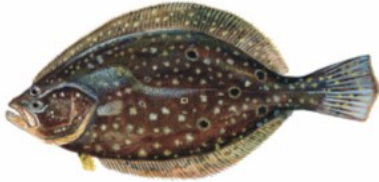


**Hard Clam 1.5 inches**

**Recreational Limit – 150 clams**

**No harvest on Sunday**

**Shellfish license required**



**Summer Flounder (Fluke)**

**Del. Bay and Tributaries 3 Fish at 17 Inches**

**All Other Marine Waters 3 fish at 18 inches**

**See Digest for IBSP and DE Bay Regulations**

**Open Season: May 22 – Sept. 19**



**Weakfish**

**1 fish at 13 inches**

**Open Season: Jan. 1 – Dec. 31**



**Black Sea Bass**

**10 fish at 12.5 inches May 15 – June 22**

**2 fish at 12.5 inches July 1 – August 31**

**10 fish at 12.5 inches Oct. 8—Oct. 31**

**15 fish at 13 inches Nov. 1—Dec. 31**



**Bluefish**

**Private/Shore Angler - 3 fish**

**For-Hire Vessel - 5 fish**

**Open Season: Jan. 1 – Dec. 31**

## 2021 NJ Recreational Minimum Size, Possession Limits, & Seasons

- Fish are measured from the tip of the snout to tip of the tail (except Black Sea Bass and Sharks).
- Filleting of fish with a minimum size limit at sea is prohibited. See the Marine Digest or the Fish & Wildlife website for exceptions.



**Tautog 15 inches**

**4 fish Jan. 1 – Feb. 28**

**4 fish Apr. 1 – Apr. 30**

**1 fish Aug. 1 – Nov. 15**

**5 fish Nov. 16 – Dec. 31**



**Striped Bass or Hybrid Striped Bass**

**1 fish at 28 inches to less than 38 inches**

**See Digest for Striped Bass Bonus Program**

Del. River and tributaries Calhoun St. Bridge,  
Trenton to Salem River and tributaries

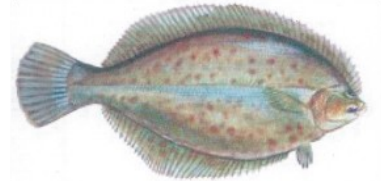
Open Mar. 1 – Mar. 31 & June 1 – Dec. 31

**Atlantic Ocean**

0-3 miles from shore, no closed season

Greater than 3 miles from shore, closed

All other marine waters, open Mar. 1 – Dec. 31



**Winter Flounder**

**2 fish at 12 inches**

**Open Season: Mar. 1 – Dec. 31**



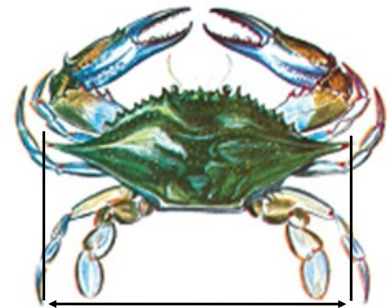
**Shark**

**1 fish per vessel**

**See NMFS for size, season, and gear restrictions**

**PROHIBITED SPECIES**  
See the Marine edition of the NJ Fish & Wildlife Digest or Fish & Wildlife's website for a complete list.

Other Species	Possession Limit	Total Length
American Eel	25	9"
Black Drum	3	16"
Cobia	1 per person, no more than 3 per vessel	40"
• Open Season: June 1 — Sept. 30		
Cod	NO LIMIT	21"
Haddock	NO LIMIT	18"
King Mackerel	3	23"
Pollock	NO LIMIT	19"
Red Drum	1	18-27"
River Herring	CLOSED	N/A
Scup (Porgy)	50	9"
Shad	6	NO LIMIT
• No more than 3 American shad in Del. Bay, River & tributaries		
• No American shad in all other waters		
Spanish Mackerel	10	14"
American Lobster	6	3 3/8" to 5 1/4" Carapace Length
• LMA 4 Open Season: Jan. 1 - Apr. 29 & June 1 - Dec. 31		
• LMA 5 Open Season: Jan. 1 - Jan. 31 & Apr. 1 - Dec. 31		
Jonah Crab	50	4 3/4" Carapace Width



**Blue Crab**

**(measured point to point)**

**Peeler or Shedder — 3 inches**

**Soft — 3½ inches**

**Hard — 4½ inches**

**Recreation Limit — One Bushel**

**Crab pot/Trot line Seasons:**

**Delaware Bay & tributaries**

**Apr. 6 — Dec. 4**

**All other waters**

**Mar. 15 — Nov. 30**

**Register before fishing! It's free, easy, and required.**  
[SaltwaterRegistry.nj.gov](http://SaltwaterRegistry.nj.gov)

New Jersey Department of Environmental Protection  
Division of Fish and Wildlife  
[www.njfishandwildlife.com](http://www.njfishandwildlife.com)

